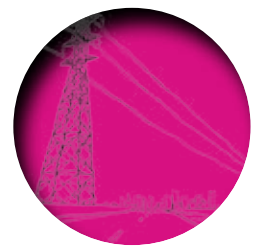
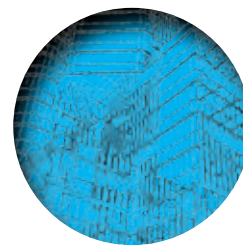
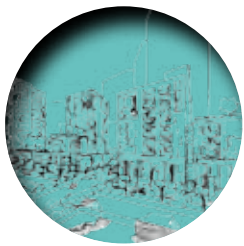


**ProCon**  
Leicestershire  
PROPERTY & CONSTRUCTION

# ANNUAL REVIEW

## 2018



# WELCOME

Welcome to the ProCon Leicestershire Annual Review for 2018 which highlights the year's activities and achievements of ProCon's property and construction network.

We held a variety of informative networking events throughout the year; these included a consultation event on the Strategic growth Plan for Leicester, an overview of the Waterside developments currently in progress and planned and a visit to Area Traffic Control. The Finalist Showcase of our Award contenders and sponsors was another highlight and well attended event with everyone keen to see who had got through to being finalists for this year's ProCon Awards.

Our planning of the programme of events for next year is already well advanced but please contact me or any other member of the Board if you have any suggestions for events and issues on which you would like ProCon to focus in the future.

As well as attending events, as a member of ProCon, you and your business can promote yourselves on our website, gaining valuable exposure for your expertise, your news and achievements. The ProCon website has a library showing events and ProCon Award winners' and finalists' projects. It also has a searchable directory, only available to fellow members, which you can use to attract new Twitter followers and forge new connections. Please do use it as a resource and news-stand. Also, please help us spread the word about ProCon: by telling new acquaintances about ProCon, invite them to ProCon events as guests and direct them to the website for more information and to become members.

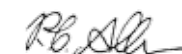
In November we hosted the 16th Annual ProCon Awards Dinner. The King Power Stadium was at capacity and again the tickets sold out to members within a minute of going on sale. The perennial popularity of the Awards and the Awards Dinner is hugely encouraging both to us as organisers but also to all those that are accorded recognition by their peers during the evening and is a brilliant way to celebrate your achievements and the positive impact you are making on the physical environment of our city and county.

The ProCon Awards Dinner has become a highlight of the business year, not just for the property and construction sector locally but of the wider business community. This was recognised by the Leicester Mercury who once again put together a supplement especially for the ProCon Awards. I hope you enjoyed the night - meeting old friends and making new ones in a congenial atmosphere.

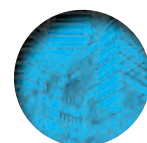
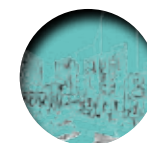
ProCon's Emerging Talent initiative is for people starting out in their careers to access help with career progression, mentoring and the forging of contacts. The steering committee of Emerging Talent have run a series of events during the year with this aim in mind. Emerging Talent members are also encouraged to attend our other ProCon events. Do look out for further Emerging Talent events in 2019 and think about whether you or people in your organisation would benefit from joining that group.

We are also delighted that ProCon is no longer just for Leicestershire and Rutland. During the Summer ProCon Nottinghamshire was launched with a very well attended event at Trent Bridge. We wish them well.

On behalf of the Board of ProCon Leicestershire, I thank you for your continued support as members, as sponsors and as patrons and look forward to seeing you all again in 2019.



**Pam Allardice, Chairperson**



# PROCON MEMBERSHIP



Being a member of ProCon plugs you and your company into a network of professionals and businesses who are involved with the building and rebuilding of Leicestershire and Rutland every day.

Benefits include:

- Access to a searchable online directory of members - only available to fellow members. From there you can attract new Twitter followers and forge new connections on LinkedIn.
- Free attendance to all ProCon's events (and bring a guest to each).
- Priority booking for the highly sought-after tickets to the ProCon Awards, which each year is sold out.
- Proof of attendance at ProCon seminars is available on request for your CPD (Continuing Professional Development).

ProCon is a not-for-profit organisation. Membership fees simply pay for its administration, website and event organisation. Membership runs from January 1 each year.

Membership fees for 2019 will be as follows:

Membership Type	Annual Fee *
Individual Membership	£96.00
Corporate Membership (1 to 9 Members)	£300.00
Large Corporate Membership (10+ Members)	£420.00
Emerging Talent	FOC until 2020

\*Includes vat

# EMERGING TALENT



**A networking group run by young professionals for the benefit of the emerging talent in the Leicestershire property and construction sector.**

**Emerging Talent** is an initiative introduced in 2017 and has been established to encourage networking for those individuals working in the property and construction related sectors who may be just starting out on their careers or who are looking to develop their careers.

Run by a steering group of young individuals who represent a broad cross section of disciplines within the property and construction sectors; the aim is to deliver suitable events, networking and even mentoring opportunities to members to enhance their career opportunities.

We have over 120 individuals who have joined ProCon as Emerging Talent members since the launch. Many more of the mainstream members are also benefitting from the Emerging Talent initiative.

Joining as an Emerging Talent member is free until January 2020, so if you think this applies to you or you have people in your organisation or supply chain that you think would benefit please visit the website for further details.

[www.procon-leicestershire.co.uk/emerging-talent](http://www.procon-leicestershire.co.uk/emerging-talent)



# PROCON WEBSITE



## What does the website offer?

### Searchable online membership directory

Where you can upload pictures, profiles and contact information and find your fellow members. It's vital that you make use of this facility to promote your work and enhance your networking opportunities.

### News

We can promote all your news stories for you. Simply upload them via the website or send to [info@procon-leicestershire.co.uk](mailto:info@procon-leicestershire.co.uk) and we will upload them for you.

### Event information

All of the planned events are detailed on the website where members can book themselves and guests to attend.

### Advertising opportunities

You can promote your company through the website for as little as **£80** plus vat per month and reach not only the **550** plus members that use the website but also anybody else that views the site.

### Website statistics

- In the last 12 months there have been **10,960** visitors to the website with **67%** being new visitors.
- There have been **48,000** page views with most visitors looking at approx **4** pages.
- The most popular pages visited have been the Awards, Events, Membership and Emerging Talent.



# 2018 EVENTS



### Emerging Talent January Drinks

Members started the year off with a social event at The Exchange in Leicester. Enjoyed by over 40 members it helped to dust away the January blues.

### The Strategic Growth Plan for Leicestershire

Over 130 ProCon members heard about The Strategic Growth Plan – a long term high level plan that is being prepared jointly by a partnership formed by Leicester City Council, Leicestershire County Council, the District and Borough Councils, and the Leicester & Leicestershire Enterprise Partnership (LLEP). The Plan will set out an agreed strategy focussing on delivering new housing, supporting the economy, identifying essential infrastructure, and protecting the environment and built heritage for the period to 2050.

### A Visit to Area Traffic Control

Members were given a behind the scenes look at Area Traffic Control for Leicestershire. They are responsible for helping manage road transport systems 24/7 across Leicester, Leicestershire and Rutland. Members were astonished at their work and thoroughly enjoyed seeing how they log problems and instruct the street engineers to resolve these. The traffic data is also used for developing future traffic schemes such as those that are happening in the city right now. They witnessed first hand the team managing the road networks using CCTV, traffic signals and other technology to help manage traffic flow across the city and beyond.

### Emerging Talent Walking Tour of Leicester

With the recent new and progressive development seen all across the city of Leicester, ProCon Emerging Talent arranged for a guided tour of famous local landmarks within the city as an appreciation of Leicester's historic built environment. Led by Michael Taylor, former Senior Building Conservation Officer at Leicester City Council and the author of the renowned book "The Quality of Leicester", the guided tour covered famous and prominent locations throughout the city and was attended by over 30 members.

### Leicester Waterside – Update and Plans

Over 120 attended this event at City Hall to hear about the Waterside projects. David Beale from Leicester City Council spoke about the regeneration of the Waterside and the opportunity to turn the area around, bring in new investment and create a vibrant and thriving neighbourhood with new homes and new workspaces. Andy Spencer from Keepmoat Homes gave details of an 18-acre brownfield site in Leicester's Waterside area that they are developing into a new neighbourhood of homes, shops and workplaces. And Charles Street Buildings spoke about the first phase of their development to include two hotels and an office block on the former Stibbe site, renovation of the former Leicester Central station, the creation of a large open public area and a super crossing of Vaughan Way to reunite the site with the city centre.

### Emerging Talent Pizza and Quiz Night

Over 50 Emerging Talent members enjoyed an evening at The Terrace for a pizza and quiz night. This event proved popular and was enjoyed by all not only those that won the quiz.

### ProCon Awards Finalist Showcase

Over 100 guests gathered to meet the finalists and sponsors of the 2018 Awards. Held at the Vijay Patel Building, a previous Award winning building, it was an excellent evening with the opportunity to network with fellow members and some non-members as well.

### Christmas Drinks

The ProCon year ended with over 80 members enjoying festive drinks and food at The Case in Leicester.



# PROCON AWARDS 2018



## SMALL RESIDENTIAL WINNER



**The Walnuts, Tilton on the Hill**  
submitted by Peter Wilmot Architects

Designed to nestle into its landscape on a raised village location, The Walnuts is a new dwelling in the grounds of an existing property. The brief required a traditional, well-proportioned, stone and brick house with a natural blue slate roof to overlook the Leicestershire countryside in a landscaped garden retaining as many natural features and trees as possible.

A key design aim was for the property to be in harmony with its surrounding village, becoming timeless in its setting.

The challenges to face included the level changes in the existing landscape and how to embrace this whilst ensuring open and light spaces externally and internally.

A formal natural ironstone front has a Georgian country farmhouse influence, whilst the use of red brick and natural oak to the south and rear achieves an overall balance of a building

normally seen as a progression over many years.

This progression of styles and materials is often seen in Leicestershire country houses. Oak is used in numerous places, forming a key aspect of the overall design.

**Contract value:** £1.3m

**Completion date:** March 2017

**Main parties involved:**

Client: Mr & Mrs Greenlees

Architect: Peter Wilmot Architects

Contractor: AF Dickson

Consulting structural engineer: Steve Gilman Design



## LARGE RESIDENTIAL WINNER



**Princess Road East, Leicester**  
submitted by Stepnell

Princess Road East is a new high-end student accommodation development of 110 studios plus communal facilities.

The four-storey block is a five-minute walk from the University of Leicester and within easy reach of De Montfort University.

Each of the 110 self-contained studio bedrooms has en-suite bathrooms. There is also a communal area, cinema room and gym. The construction features pre-engineered modular bathroom pods which were delivered to the site fully fitted and ready to be installed, significantly reducing construction times.

Princess Road East also incorporates energy-saving technology, including heat recovery ventilation systems and air source heat pumps for hot water heating.

High quality bricks and contemporary glazing emphasised by a dark grey aluminium window

surround sit in harmony with the adjoining Grade II listed building fronting De Montfort Square.

**Contract value:** Undisclosed

**Completion date:** January 2018

**Main parties involved:**

Client: Zone Developments

Architect: MAS Architecture

Quantity surveyor: MDA Consulting

Contractor: Stepnell

Engineer: Farrow Walsh Consulting

M&E engineer: Built Environment Consulting

## FINALISTS



**The Oaks, Rothley**  
submitted by HSSP Architects



**The Shah House, Stoughton**  
submitted by Corporate Architecture

SPONSORED BY



## FINALISTS



**Chevron Court, Leicester**  
submitted by GWH Architects



**Waterside Court, Loughborough**  
submitted by brp architects

SPONSORED BY



# PROCON AWARDS 2018



## SMALL NON-RESIDENTIAL WINNER



**Get Busy Living Centre, Burrough on the Hill** submitted by Willmott Dixon, MDA Consulting, Corporate Architecture, Salus, BSP Consulting, Couch Perry Wilkes, CPMG Architects and Derry Building Services

The Get Busy Living Centre, brainchild of the Matt Hampson Foundation, is a state-of-the-art facility for those who have suffered life-changing injuries through sport. It is somewhere for injured athletes and their families to spend time together and meet others in similar situations, as well as offering services like physical rehabilitation.

Established by Matt Hampson, the former England Under-21 rugby player who suffered a life-changing injury during sport, it provides a place for beneficiaries to spend time in a supportive and well-equipped environment. Eight companies collaborated on the construction of the Get Busy Living Centre and, with local supply chain partners, saved the Matt Hampson Foundation more than £1million by providing services and materials for free or cost price. At market value the build would have cost the Matt Hampson Foundation £367.77 per square foot, but instead it cost £163.38 per square foot.

Built on a site of historic interest – a former aircraft hangar that was used in the war – the transformation was important to the local community. It's now a prominent feature in the local landscape with a cladding made from copper and timber to maintain the overall look of the original building.

**Contract value:** £1.8m  
**Completion date:** December 2017  
**Main parties involved:**  
Client: Matt Hampson Foundation  
Contractor: Willmott Dixon  
Cost consultant: MDA Consulting  
Lead architect: Corporate Architecture  
Building control: Salus  
Structural and civil engineer: BSP Consulting  
MEP designer: Couch Perry Wilkes  
Internal finishes designer: CPMG Architects

## FINALISTS



**New Chimpanzee Eden, Twycross Zoo** submitted by MDA Consulting



**Thrussington Primary School – New Teaching Block** submitted by YMD Boon

SPONSORED BY

**INFRASTRUCTURE INVESTMENTS LTD**

# PROCON AWARDS 2018



## LARGE NON-RESIDENTIAL WINNER



**Mountsorrel Memorial Centre, Mountsorrel** submitted by Stepnell

The new Mountsorrel Memorial Centre replaced an existing well-used facility that no longer met the demands of the growing village. Commissioned by the Mountsorrel War Memorial Trust and Mountsorrel Parish Council, the new multi-purpose facility contains a theatre, a café space, two shops and a crèche, as well as a music and arts performance and practice room plus meeting rooms.

The new building incorporates traditional materials including the well-known local granite. It also features large areas of high-specification glazing, a striking zinc-clad tiered roof and energy-saving solar panels. The Hall and its predecessor were designed to remember the local men who died in wars. A local slate plaque engraved with the names of the fallen is prominently positioned in the main entrance reception.

The main hall also features a balcony that leads to a floor to ceiling glazed hospitality space

under the exposed curved roof. Outside, there is car parking for more than 60 vehicles. The project also provided work experience opportunities with Stepnell working with local business volunteering charity Leicestershire Cares to organise a number of work experience days.

**Contract value:** £3.9m  
**Completion date:** January 2018  
**Main parties involved:**  
Client: Mountsorrel Parish Council  
Contractor: Stepnell  
Architect: Franklin Ellis Architects  
Quantity surveyor: MDA Consulting  
Engineer and mechanic and electrical engineer: Pick Everard

## FINALISTS



**Birkett House SEN School, Wigston** submitted by Willmott Dixon, A+G Architects and BSP Consulting



**Steris, Watermead, Leicester** submitted by Stephen George + Partners

SPONSORED BY

**INFRASTRUCTURE INVESTMENTS LTD**



# PROCON AWARDS 2018



## REGENERATION PROJECT WINNER



**Winstanley House, Leicester**  
submitted by MAS Architecture

Originally built in the 18th century and home to the Winstanley family for more than 150 years, Braunstone Hall has been reborn as Winstanley House – a wedding venue, banqueting hall, hotel and restaurant.

The original buildings are now linked by a one storey extension, inspired by the famous 1929 Barcelona Pavilion, creating a reception area. The project restored original features complemented by modern additions that honour the grace and grandeur of Braunstone Hall. The derelict Grade II listed building has been given a new future as a venue for weddings, conferences, entertaining and relaxation. Restoring the original architectural and interior features used local skilled artisans and materials such as lime plaster and single glass pane sash windows. The modern element of floor-to-ceiling glass is married with the old by careful detailing.

The accommodation includes bridal suites and 18 bedrooms. Its location in Braunstone Park provides a tranquil setting within the city.

**Contract value:** £3m  
**Completion date:** November 2017  
**Main parties involved:**  
Architect: MAS Architecture  
Surveyor: rg+p  
Developer and contractor: Parmar Properties  
Consulting engineers: Diamond Wood and Shaw

## FINALISTS



**Redevelopment of the former Leicester City Council site, New Walk, Leicester**  
submitted by MDA Consulting



**The Knight & Garter, Leicester**  
submitted by Fusion Electrics

SPONSORED BY



# PROCON AWARDS 2018



## INFRASTRUCTURE PROJECT WINNER



**New Lubbethorpe Sustainable Urban Extension**  
submitted by Mather Jamie

The £40m New Lubbethorpe is a Sustainable Urban Extension which will eventually have 4,250 homes.

Its infrastructure includes a new bridge over the M1, new road network connecting Beggars Lane to Meridian Way, foul drainage system including pumping stations, sustainable urban drainage scheme including swales and ponds, and public open space.

The first homes have been built, with 150 already occupied, and construction of a new primary school has begun. New Lubbethorpe is the only Leicestershire Sustainable Urban Extension (SUE) to be started and is now delivering much needed new homes. Granted outline planning consent in 2014, the project will include more than 320 acres of new parks.

The first element of sustainable urban drainage has walkways, pedestrian footbridges and

landscaping including tree planting. The infrastructure includes a bridge across the M1 and the opening of Tay Road, which links Meridian Way to Beggars Lane. Both opened in July 2017.

**Contract value:** £40m  
**Completion date:** June 2018  
**Main parties involved:**  
Landowner: Trustees of ERB Drummond  
Development agents: Mather Jamie  
Project and contract managers: Bentley Project Management  
Local authority: Blaby District Council

## FINALISTS



**Charter Street Footbridge, Leicester**  
submitted by Danaher & Walsh and Leicester City Council

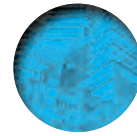


**SuDS at Birkett House SEN School**  
submitted by BSP Consulting

SPONSORED BY



# PROCON AWARDS 2018



## ARCHITECTURAL IMAGE WINNER



**STEM Lab – Loughbrough University – internal**  
Christopher Terry, Christopher Terry Photography, Nottingham

SPONSORED BY

**STURGIS**  
SNOW & ASTILL

COMMERCIAL PROPERTY CONSULTANTS

## FINALISTS



**Externals of the Visitor Training Centre**  
Jerry Wesley, Jerry Wesley Photography, Kibworth Beauchamp



**Materials**  
Jerry Wesley, Jerry Wesley Photography, Kibworth Beauchamp



**STEM Lab – Loughbrough University – external**  
Christopher Terry, Christopher Terry Photography, Nottingham



**TGW Phase 2 Roof Elevation**  
Jerry Wesley, Jerry Wesley Photography, Kibworth Beauchamp

# PROCON PATRONS

The Patron scheme is an affordable way to promote your company to over 600 ProCon members through the website and at the ProCon events. Only a limited number of Patrons are selected to ensure exclusivity and maximise exposure to the membership. If you are interested in finding out more about the benefits of becoming a Patron please call 0116 278 1443 or email [info@procon-leicestershire.co.uk](mailto:info@procon-leicestershire.co.uk)

The ProCon Leicestershire Board would like to thank the following organisations for their support during 2018:



### Allardice Associates

Pam Allardice  
07887 888738  
[pam@allardiceassociates.com](mailto:pam@allardiceassociates.com)



### Bakers Waste

Paul Baker  
0370 350 6350  
[paul@bakerswaste.co.uk](mailto:paul@bakerswaste.co.uk)  
[www.bakerswaste.co.uk](http://www.bakerswaste.co.uk)



### Berkeley Insurance Group

David Moss  
0116 261 4747  
[dmos@berkeleyinsurancegroup.co.uk](mailto:dmos@berkeleyinsurancegroup.co.uk)  
[www.berkeleyinsurancegroup.co.uk](http://www.berkeleyinsurancegroup.co.uk)



### Corporate Architecture

Malcolm Foulkes-Arnold  
01858 467476  
[mvfa@corporatearchitecture.co.uk](mailto:mvfa@corporatearchitecture.co.uk)  
[www.corporatearchitecture.co.uk](http://www.corporatearchitecture.co.uk)



### Danaher & Walsh Group

Rob Jones  
0116 269 5900  
[civils@danaherandwalsh.co.uk](mailto:civils@danaherandwalsh.co.uk)  
[www.danaherandwalsh.co.uk](http://www.danaherandwalsh.co.uk)



### Diamond Wood and Shaw

Fergus Shaw  
0116 284 8989  
[f.shaw@dwsLtd.co.uk](mailto:f.shaw@dwsLtd.co.uk)  
[www.diamondwoodandshaw.co.uk](http://www.diamondwoodandshaw.co.uk)



### Howes Percival Solicitors

Courtney Borthwick  
0116 247 3510  
[courtney.borthwick@howespercival.com](mailto:courtney.borthwick@howespercival.com)  
[www.howespercival.com](http://www.howespercival.com)



### MDA Consulting

Robert McGuinn  
0116 254 8951  
[rmcguinn@mdaconsulting.co.uk](mailto:rmcguinn@mdaconsulting.co.uk)  
[www.mdaconsulting.co.uk](http://www.mdaconsulting.co.uk)



### Premier Development Contractors

Shyam Sudera  
0116 214 5099  
[info@premierdc.co.uk](mailto:info@premierdc.co.uk)  
[www.premierdc.co.uk](http://www.premierdc.co.uk)



### Salus Approved Inspectors

Paul Meadows  
[info@salusai.co.uk](mailto:info@salusai.co.uk)  
0333 800 5678  
[www.salusai.co.uk](http://www.salusai.co.uk)



### Unique Window Systems

Sunil Patel  
0116 236 4656  
[sales@uws.co.uk](mailto:sales@uws.co.uk)  
[www.uws.com](http://www.uws.com)



### Willmott Dixon Construction

Nick Heath  
07816 845622  
[nick.heath@willmott-dixon.co.uk](mailto:nick.heath@willmott-dixon.co.uk)  
[www.willmott-dixon.co.uk](http://www.willmott-dixon.co.uk)



# ACKNOWLEDGEMENTS

The ProCon Board would like to thank the following organisations for their support to produce the ProCon Awards 2018:

## CORPORATE SPONSORS



**Countryside Partnerships  
East Midlands**  
Glynn Mabey  
0116 264 3613  
Glynn.Mabey@cpplc.com  
www.countrysideproperties.com



**Salus Approved Inspectors**  
Paul Meadows  
0333 800 5678  
info@salusai.co.uk  
www.salusai.co.uk



**Unique Window Systems**  
Sunil Patel  
0116 236 4656  
sales@uws.co.uk  
www.uws.com



**Leicester Mercury**  
Tom Pegden  
0116 366 5216  
thomas.pegden@reachplc.com  
www.leicestermercury.co.uk



**HeadStorm Marketing  
& Event Management**  
Allyson Jeffrey  
0116 278 1443 / 07803 126807  
allyson@headstorm.co.uk

## SPECIALIST JUDGES:

Paul Baker, Bakers Waste / Michael Bennett, Shoosmiths / Hannah Brennen, MDA Consulting / Melissa Chantrill, Gateley Plc / Kanti Chhapi, Stephen George + Partners / Stephen Corbett, Willmott Dixon / Richard Frape, Morgan Sindall / Andy Hardy, A+G Architects / Nick Hilton, North Midland Construction / Sarah Hollis, Shakespeare Martineau / Robert Jones, Danaher & Walsh / Richard Julian, RJA Consultants / Andrew Kenyon, JMS Engineers / Mark McConnell, Built Environment Consulting / Lora Moutafova, Howes Percival / Nick Preedy, Willmott Dixon / Matt Price, Curtins Consulting / Frazer Robson, Frazer Robson Planning / Toby Savage / Alfie Simons, Corporate Architecture / Shyam Sudera, Premier Development Contractors / Tim Webster, Danaher & Walsh / Peter Wilkinson, Landmark Planning

## AWARD SPONSORS



**Galliford Try Partnerships**  
Paul Hanley  
0116 282 1107  
paul.hanley@gallifordtry.co.uk  
www.gallifordtry.co.uk



**Infrastructure Investments  
(Leicester) Ltd**  
James Boyle  
0870 242 7621  
j.boyle@iiluk.com



**Keepmoat Homes**  
Charlene Withall  
0115 858 1400  
charlene.withall@keepmoat.com  
www.keepmoatcorporate.com



**Robert Pochin**  
Lisa Grocock  
0116 232 7667  
lisa.grocock@robertpochin.co.uk  
www.pochin.com



**Sturgis Snow and Astill**  
David Sturgis  
0116 255 5999  
dgs@sturgis-snowandastill.co.uk  
www.sturgis-snowandastill.co.uk

## ASSOCIATE SPONSORS



**Built Environment Consulting**  
Mark McConnell  
01332 811711  
markmcconnell@bec-consulting.co.uk  
www.bec-consulting.co.uk



**Corporate Architecture**  
Malcolm Foulkes-Arnold  
01858 467476  
mvfa@corporatearchitecture.co.uk  
www.corporatearchitecture.co.uk



**Corporate Debt Solutions – Global  
Presentation sponsor**  
Ashley Barratt  
0800 368 8637  
ashley.barratt@cds.org.uk  
www.cdsolutionsglobal.co.uk



**Diamond Wood and Shaw**  
Fergus Shaw  
0116 284 8989  
f.shaw@dwsLtd.co.uk  
www.diamondwoodandshaw.co.uk



**Edward Cooper Young Chartered Surveyors**  
Ashley Cooper  
0843 658 5330  
a.cooper@ecycs.co.uk  
www.ecycs.co.uk



**Fusion Electrics  
Finalist Showcase sponsor**  
Joanne Skinner  
01530 249752  
Joanne@fusionelectrics.co.uk  
www.fusionelectrics.co.uk



**Gateley  
Place Card sponsor**  
Simon Taylor  
0116 285 9000  
simon.taylor@gateleyplc.com  
www.gateleyplc.com



**Kier  
Guest List sponsor**  
Richard Charman  
0115 986 8856  
richard.charman@kier.co.uk  
www.kier.co.uk



**Mazars  
Menu sponsor**  
Bob Johnson  
0116 281 6500  
Bob.Johnson@mazars.co.uk  
www.mazars.co.uk



**MDA Consulting**  
Rob McGuinn  
0116 254 8951  
rmcguinn@mdaconsulting.co.uk  
www.mdaconsulting.co.uk



**Ridge and Partners**  
Roger Sandell  
0116 245 6600  
rsandell@ridge.co.uk  
www.ridge.co.uk



**Stepnell  
Event Programme and Ticket sponsor**  
Tom Sewell  
0115 697 9200  
thomas.sewell@stepnell.co.uk  
www.stepnell.co.uk



**The Fox Group**  
Jon Fox / Sue Warner  
01858 545200  
office@thefoxgroup.net



**Willmott Dixon  
Trophy and Certificate sponsor**  
Nick Heath  
0115 977 1322  
nick.heath@willmottdixon.co.uk  
www.willmottdixon.co.uk

**ProCon contact information:**

Allyson Jeffrey at HeadStorm Marketing & Event Management Ltd

Tel: 0116 278 1443

Email: [info@procon-leicestershire.co.uk](mailto:info@procon-leicestershire.co.uk)

[www.procon-leicestershire.co.uk](http://www.procon-leicestershire.co.uk)

