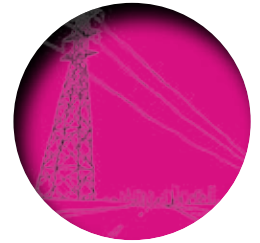
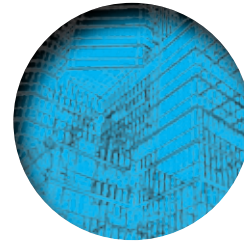
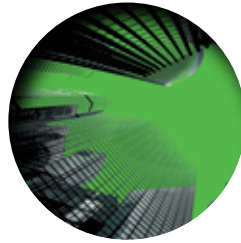
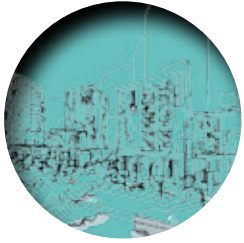


**ProCon** 2018  
LEICESTERSHIRE PROPERTY AND  
CONSTRUCTION AWARDS 2018



# GUEST LIST

KING POWER STADIUM  
15 NOVEMBER 2018



GUEST LIST SPONSOR

# ROOM PLAN

## THE WALKERS HALL

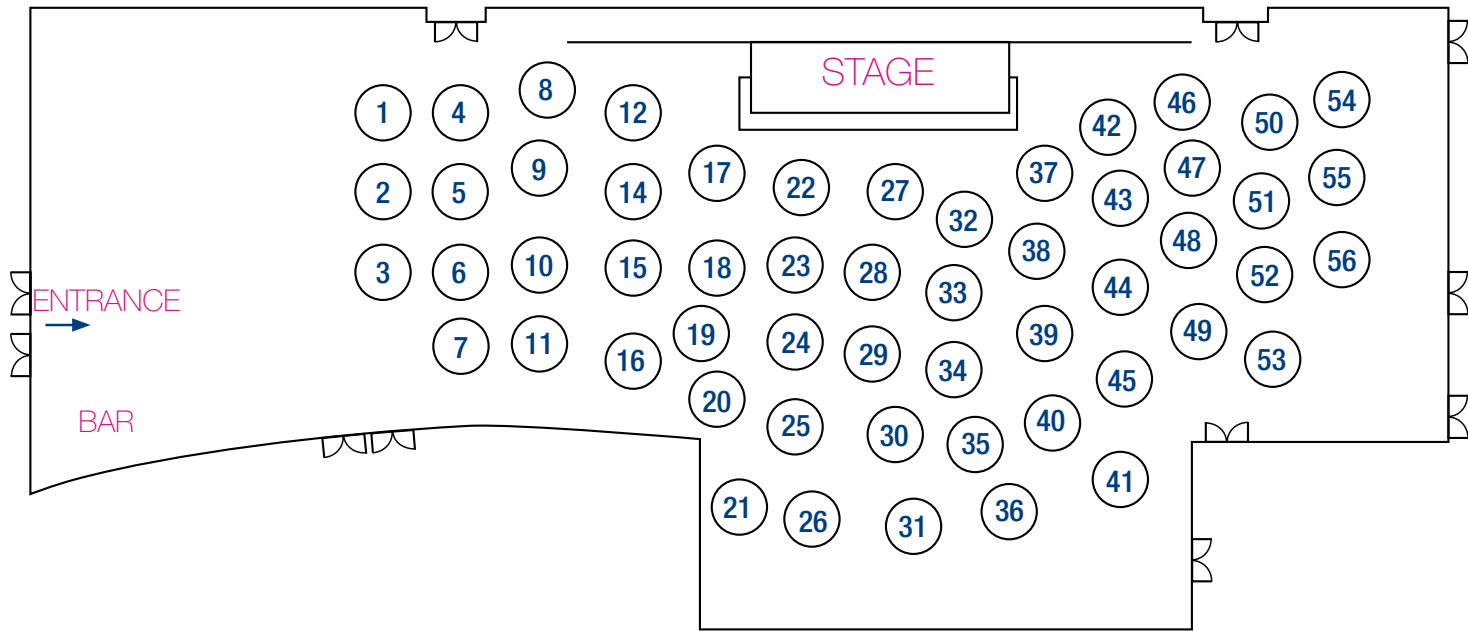


TABLE 1

**Interserve Construction Ltd**

Richard Crowson  
James Flint  
Karen Hargrave  
Jillian McCarthy  
Fred Robson  
Richard Scarrott  
Mark Smith  
Neil Smith  
Zoe Summerfield  
Geoff Tindsley

Watson Batty  
Interserve  
Freeths  
Lincolnshire County Council  
De Montfort University  
Interserve  
Stephen George  
Edge  
Interserve  
Edge

TABLE 2

**Spearing Waite LLP**

Tom Bower  
Nisha Gohel  
Karen Herbert  
Peter Hotchin  
Joseph Murphy  
James Pritchard  
Caroline Smith  
Darren Smith  
Siobhan Smyth  
Rob Thorley  
Piet van Gelder  
Jonathan Wheeler

Spearing Waite LLP  
Spearing Waite LLP  
Spearing Waite LLP  
Mather Jamie  
Charles Street Buildings Group  
LSP Developments  
Spearing Waite LLP  
Spearing Waite LLP  
Spearing Waite LLP  
Jelson Ltd  
Spearing Waite LLP  
Spearing Waite LLP

TABLE 3

**Kal Sangra Shonki Brothers Ltd**

Dave Berry  
Paul Brown  
Michael Kler  
Sokhi Mattu  
Neil Roper  
Kal Sangra  
Ruv Sangra  
Haroon Shiekh  
Aman Verma  
Mark Williams

The Y  
Whos who  
Chartwell Group  
Assest Capital  
Kal Sangra Shonki Brothers  
Lunson Mitchenall  
Obsidian Strategies Ltd  
Kal Sangra Shonki Brothers  
Abaco Insurance

TABLE 4

**Leicester City Council**

Phil Black  
Grant Butterworth  
Keith Hobden  
Sophie Noon  
Louise Seymour  
Andrew Smith  
Richard Sword  
Matthew Wallace  
Guest  
Guest  
Guest

Arcadis  
Leicester City Council  
Arcadis  
Leicester City Council  
Leicester City Council  
Leicester City Council  
Arcadis  
Leicester City Council  
Leicester City Council  
Leicester City Council  
Leicester City Council

TABLE 5

**Fusion Electrics**

Scott Cassie  
James Ely-Gaunt  
Matt Flint  
Sam Hagger  
Paul Maddern  
Jason Skinner  
Joanne Skinner  
Tom Walker  
Guest  
Guest

Cassie Roofing  
Interserve  
Leicester University  
Ssoosh Inns  
Pick Everard  
Fusion Electrics  
Fusion Electrics  
Uppingham School Estates  
Fusion Electrics  
Fusion Electrics

TABLE 6

**Stepnell Ltd**

Stephen Holgae  
Liam King  
Phil McKiernan  
John Pointon  
Viresh Popat  
Thomas Sewell  
Neil Thakkar  
Stewart Walker  
Christian White  
Richard Wood

University of Leicester  
Stepnell Ltd  
Pulse Associates  
University of Leicester  
Zone Developments Ltd  
Stepnell Ltd  
Zone Developments Ltd  
Stepnell Ltd  
Stepnell Ltd  
Stepnell Ltd

TABLE 7

**NatWest Bank**

Nav Aggarwal  
Mani Chauhan  
Ben Cripps  
Ian Griffiths  
Steve Houchen  
Anne-Marie Hunt  
Joe Levy  
Pareesh Parmar  
Neetal Popat

Property Base  
East Park Investments Ltd  
NatWest Bank  
Langton Homes  
Summers Inman  
Shelling Properties  
NatWest Bank  
Launch Padz Ltd  
Parmar Estates  
Coventry Parkside Developments

TABLE 8

**Pick Everard**

Natalie Clemson  
Suzanne Everitt  
Duncan Green  
Alastair Hamilton  
Aarti Raj  
Guest  
Guest  
Guest  
Guest

Pick Everard  
Mattioli Woods  
Pick Everard  
Pick Everard  
Pick Everard  
Pick Everard  
Pick Everard  
Pick Everard  
Pick Everard

TABLE 9

**Allardice Associates**

Pam Allardice  
Chris Evans  
Madelaine Hanlon  
Tomer Meiorom  
Tricia Morrison  
John Simkin

Allardice Associates  
APD  
Hanlon Consulting  
Huber car park systems International GmbH  
Hill Dickinson LLP  
Pick Everard

**brp architects**

James Garner  
April Knapp  
Victoria Robb  
Alan Sankey  
Tim Wade  
Christopher Woods

brp architects  
EMH Group  
EMH Group  
brp architects  
EMH Group  
brp architects

TABLE 10

**Mather Jamie Ltd**

Andrew Bamber  
Jonathon Bentley  
Amy Biddell  
Emma Chambers  
Elvis Drummond  
Kim Drummond  
Jonathan Fear  
Nick Fenton  
Euan Hall  
Catherine Hartley  
Martin Jones  
Martin Ward

Mather Jamie  
Bentley Project Management  
Mather Jamie  
Mather Jamie  
Drummond Estate  
Drummond Estate  
Shakespeare Martineau  
Rodgers Leask  
The Land Trust  
Blaby District Council  
Shakespeare Martineau  
Mather Jamie

TABLE 11

**Chris Terry Photography**

Chris Terry  
Michael Cummins  
Guest  
James Botterill  
Richard Cooper  
Samantha Griffiths  
Rosalind Harvey  
Jack Horsnall  
Mark Horsnall

Chris Terry Photography  
Cummins Employment Solicitors  
Cummins Employment Solicitors  
HSSP Architects Ltd  
HSSP Architects Ltd  
HSSP Architects Ltd  
HSSP Architects Ltd  
Sulus Homes Ltd  
Sulus Homes Ltd

**HSSP Architects Ltd**

**Judges**

Stephen Corbett  
Andrew Kenyon  
Tim Webster

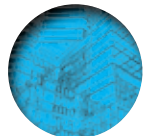
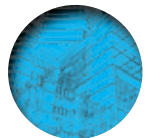
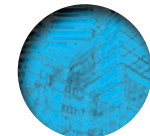
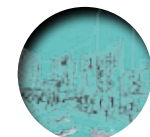
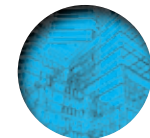
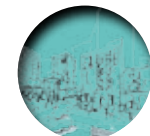
Willmott Dixon Homes  
JMS Consulting Engineers  
Danaher & Walsh

TABLE 12

**Infrastructure Investments/ Leicester City Council**

Dan Green  
David Cronje  
Louise Ingram  
Mark Oakley  
Mike Dalzell  
Paul Edwards  
Paul Wakefield  
Phil Coyne  
Simon Collin  
Simon Stanion

Summers Inman  
Summers Inman  
Shakespeare Martineau  
Leicester City Council  
Leicester City Council  
Shakespeare Martineau  
Leicester City Council  
Leicester City Council  
Shakespeare Martineau



**TABLE 14**                      **TABLE 15**                      **TABLE 16**                      **TABLE 17**                      **TABLE 26**                      **TABLE 27**                      **TABLE 28**                      **TABLE 29**

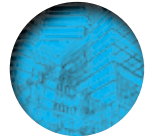
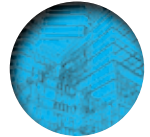
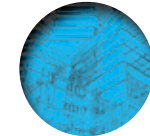
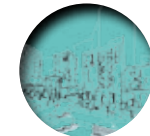
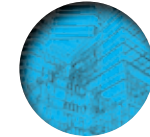
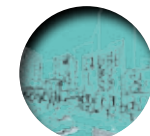
<b>Keepmoat Homes</b>		<b>Corporate Architecture Ltd and Jerry Wesley Photography</b>		<b>Corporate Architecture</b>		<b>Galliford Try Partnerships</b>		<b>RSM</b>		<b>Countryside Partnerships East Midlands</b>		<b>Countryside Partnerships East Midlands</b>		<b>Judges</b>	
Peter Douglas	Keepmoat Homes	Richard Coppock	Corporate Architecture Ltd	Alan Barnacle	Willow Brook Farm	Helen Brown	Futures Housing Group	Kelly Boorman	RSM	Andrew Bland	Pygott & Crone	Andy Beattie	Sigma Capital Group plc	Michael Bennett	Shoosmiths
Jordan Fielding	Keepmoat Homes	Chris Goodwin	Andrew Granger & Co	Gaynor Barnacle	Willow Brook Farm	Dena Burgher	Galliford Try Partnerships	Neil Coote	Lindum Group	Chris Brown	Countryside Partnerships East Midlands	Alan Boucker	Futures Housing Group	Richard Julian	RJA Consultants
Shaun Fielding	Keepmoat Homes	Chris Green	Andrew Granger & Co	Jason Edwards	Corporate Architecture Ltd	Paul Hanley	Galliford Try Partnerships	Kevin Harris	RSM	Rob Cole	Mather Jamie	Giovanni Corbo	Countryside Partnerships East Midlands	<b>YMD Boon Ltd</b>	
Andy Mason	Keepmoat Homes	Tom Joule	Joules	Alex Kowalczyk	BSD	Chris Jones	Harris Lamb	Jonathan Holmes	RSM	Adam Daniels	Countryside Partnerships East Midlands	Allan Fisher	Nottingham Community Housing Association	Neil Beresford	YMD Boon
Lee McGlinchey	Keepmoat Homes	Stephen Mair	Andrew Granger & Co	Alfie Simons	Corporate Architecture Ltd	Mark Jones	Longhurst Housing Group	Andy Ilisley	RSM	Glyn Mabey	Countryside Partnerships East Midlands	Ian Jackson	Longhurst Group	James Frost	Gleeds
Lee Parry	Keepmoat Homes	Fraser Mercer	Mercer Building Solutions	Lance Wiggins	Landmark Planning	Andy Reynolds	Galliford Try Partnerships	Max Kwan	RH Development	Phil McHugh	Countryside Partnerships East Midlands	John True	Countryside Partnerships East Midlands	Tom Hart	HBA Consulting Engineers Ltd
Greg Roberts	Keepmoat Homes	Katy Mercer	Mercer Building Solutions	<b>Maber Architects</b>		Anthony Riley	Platform Housing Group	David Moss	Berkeley Insurance Group	Matthew Moore	Countryside Partnerships East Midlands	Gary Turner	Countryside Partnerships East Midlands	Liz Moore	Thrussington Primary School
Andy Spencer	Keepmoat Homes	Tim Rodgers	Corporate Architecture Ltd	Emma Atkins	Maber Architects	Ben Smith	Summers Inman	Max Palmer Jeffery	Berkeley Insurance Group	Matt Oliver	Pendimo Land + Property Consultants	Guest	Countryside Partnerships East Midlands	Louise Morris	Fortem
Janet Strizaker	Keepmoat Homes	Jerry Wesley	Wesley Photography	Rob Cant	Morgan Sindall	James Warrington	Galliford Try Partnerships	Sheetal Sanghvi	RSM	Guest	Countryside Partnerships East Midlands	Guest	Countryside Partnerships East Midlands	Patrick Randall	Thrussington Primary School
Charlene Withall	Keepmoat Homes	Louise Wesley	Wesley Photography	<b>Maxim Recruitment Ltd</b>		Greg Wood	Galliford Try Partnerships	Jamie Weir	Jeakins Weir	Guest	Countryside Partnerships East Midlands	Guest	Countryside Partnerships East Midlands	Shari Setayesh	YMD Boon
		William Winterson	Network Estates	Chris Donachie	Henry Riley									David Spray	Gleeds
		Guest	Corporate Architecture Ltd	Stuart Hackett	Maxim Recruitment Ltd										
				Katie Keenan	Maxim Recruitment Ltd										
				Steve Thomas	Maxim Recruitment Ltd										

**TABLE 18**                      **TABLE 19**                      **TABLE 20**                      **TABLE 21**                      **TABLE 30**                      **TABLE 31**                      **TABLE 32**                      **TABLE 33**

<b>Corporate Architecture Ltd</b>		<b>Kier</b>		<b>James Sellicks Estate Agents</b>		<b>Gateley Plc</b>		<b>Built Environment Consulting Ltd</b>		<b>Freeths LLP</b>		<b>Unique Window Systems Ltd</b>		<b>Danaher &amp; Walsh</b>	
Rachel Bowen-Curtis	Cambridge and Counties Bank	Richard Charman	Kier	Jonathan Cameron	James Sellicks Estate Agents	Jon Bennett	Leicestershire County Council	Annette Appleton	YMD Boon	Simon Abbott	Freeths LLP	Rob Addis	Winvic	Andy Barradell	Lindum Construction
James Brown	Rural Insights	David Featherstone	Buildling Services Design	Naomi Ellwood	James Sellicks Estate Agents	Jamie Bunce	Inspired Villages	Peter Bale	Leicester City Council	Simon Baigent	Freeths LLP	Tim Boxford	Maber Architects	Daniel Danaher	Danaher & Walsh
Lucinda Foulkes-Arnold	Corporate Architecture Ltd	Andrew Glenn	Kier	Anne Mann	James Sellicks Estate Agents	Melissa Chantrill	Gateley Plc	Andrew Bodill	North Midland Construction	Nic Davies	Freeths LLP	Adrian Goodrich	Maber Architects	Ian Dunckley	Tungsten Properties
Malcolm Foulkes-Arnold	Corporate Architecture Ltd	Ian Gregg	Projex Building Solutions	Lauren Rees	James Sellicks Estate Agents	Vivienne Clements	Henry Boot Developments	Carrie Booth	BSP Consulting	Alexa Dunkley	Freeths LLP	Sam Harrington	Winvic	Alex Gibson	William Saunders
Steve Mitchell	Mulberry Homes	Ian Harris	Mabers	<b>Leicester Mercury</b>		Graeme Cosgrove	Henry Davidson Developments	Steven Collin	RJA Consultants	Fiona Harrison	Freeths LLP	Mark Jones	Winvic	Ian Gilbert	Danaher & Walsh
Patric Phelan	James Patric LLP	Ian McCann	Isherwood McCann	Gareth Costello	Leicester Mercury	Neal Dale	Inspired Villages	Aaron Levy	Abode Living	Matt Jackson	Freeths LLP	Sam Miller	Unique Window Systems Ltd	Claire Gooch	Leicester City Council
James Phillips	APB Surveyors	David Nisbet	Pick Everard	Tom Pegden	Leicester Mercury	Colin Gittus	Gateley Plc	Mark Mcconnell	BEC	Rena Magdani	Freeths LLP	Bradley Newman	Unique Window Systems Ltd	Teresa Hylton	Waterman Aspen
David Pochin	Pochin Ltd	Mark Pausey	Kier	<b>Peter Wilmot Architects Ltd</b>		Mark Hawthorne	Rula Developments	Fay Paterson	North Midland Construction	Sam Pancholi	Freeths LLP	David Rowley	Unique Window Systems Ltd	Ed Jeffrey	Rotherhill
Tim Powell	Clifton Square	Phil Southgate	Gleeds	Addy Dickson	AF Dickson Building Contractors	Rob Hepwood	CWC Group	Toby Preston	Bray & Bray	Mukesh Patel	Freeths LLP	Jamie Staples	Charles Street Building Group	Robert Jones	Danaher & Walsh
William Smedley	Crisp Architecture	Tim Ward	Everards Brewery	Melanie Dickson	AF Dickson Building Contractors	Alex Parkes	Gateley Plc	Joe Shelton	North Midland Construction	Harjit Saund	Freeths LLP	James Stiff	Brown & Shaw	Spencer Robinson	B&K Building Services
Lynn Waldron	Rascasse Developments			Jeff Gravener	AF Dickson Building Contractors	Jon Robinson	Barberry Developments	David Yates	YMD Boon	Amjad Sheikh	Freeths LLP	Russ Stiff	Brown & Shaw	Abul Tarafder	Leicester City Council
Guest	Pochin Ltd			George Greenlees		Simon Taylor	Gateley Plc	Guest	YMD Boon	Emma Tattersdill	Freeths LLP	James Wigley	D W Hicks	Ed Willars	Danaher & Walsh
				Wendy Greenlees											
				Peter Wilmot	Peter Wilmot Architects										

**TABLE 22**                      **TABLE 23**                      **TABLE 24**                      **TABLE 25**                      **TABLE 34**                      **TABLE 35**                      **TABLE 36**                      **TABLE 37**

<b>Salus Approved Inspectors</b>		<b>Sturgis Snow and Astill</b>		<b>Judges</b>		<b>Stephen George + Partners</b>		<b>MDA Consulting</b>		<b>MAS Architecture</b>		<b>EME Installations Limited</b>		<b>Unique Window Systems Ltd</b>	
Nathan Bryant	Salus Approved Inspectors	Keith Bastian	Fischer Future Heat	Richard Frape	Morgan Sindall	Iain Cox	Galliford Try	Louise Biffin	Twycross Zoo	Adel Al-Salloum	Spark Arts	Steve Dempsey	EME Installations	Adam Ball	J A Ball
Vanessa Fisher	Salus Approved Inspectors	Maria Bastian	Fischer Future Heat	Lora Moutafova	Howes Percival	Mark Deakin	Turner & Townsend	Nigel Butler	MDA Consulting Ltd	Muthar Al-Salloum	MAS Architecture	Dave Elson	Winvic	Dan Bodel	J A Ball
Clive Hemming	Salus Approved Inspectors	Chris Castleman	Newby Castleman	Matt Price	Curtins Consulting	Nick Emmett	University of Leicester	Neil Dorman	Twycross Zoo	Steve Buchan	MAS Architecture	Brad Ewin	EME Installations	Dave Culpin	Davidsons Homes
Chris May	Howes Percival	Audrey Green	Greenfizz Consulting	Peter Wilkinson	Landmark Planning	Wayne Evans	East Midlands Housing	Will Eccles	MDA Consulting Ltd	Lee Coluson	maber project planning	Tom Hankins	Winvic	Andy Hallam	Hallam Read
Paul Meadows	Salus Approved Inspectors	Alec Hamlin	Blueprint	<b>Stephen George + Partners</b>		Rob Garton	Turner & Townsend	David Franklin	Franklin Ellis Architects	Rob Dyson	Stepnell	Martyn Hicks	D W Hicks	Duncan Hutton	Buildrite
Paud Moriarty	Salus Approved Inspectors	Matt Harding	Goodrich Cutler Associates	Alan Charlton	Steris Ltd	Luke Gisborne	University of Leicester	Connor Godden	MDA Consulting Ltd	Khushal Karelia	MAS Architecture	Lea Kane	EME Installations	Kenny Leadbeater	SGP
Stuart Power	Salus Approved Inspectors	Joe Nixon	Arch Creative	Mike Hatton	A & H Construction & Developments plc	Phill Goodwin	Galliford Try	Matyas Liptovszky	Twycross Zoo	Leah Lopes	MAS Architecture	Robin Orgill	Winvic	Dave Markie	Winvic
Paul Pulis	Salus Approved Inspectors	Naresh Parmar	Parmar Properties	Martin Head	A & H Construction & Developments plc	Kumar Muniandy	Stephen George + Partners	Jaaron Mudhur	MDA Consulting Ltd	Bina Popat	Zone Luxury Developments	Robin Saunders	D W Hicks	Sunil Patel	Unique Window Systems Ltd
Danny Shewring	McLaren Construction	Sharon Parmar	Parmar Properties	Alex Morgan	Stoford	James Nicholls	Stephen George + Partners	Tim Shattock	APB Leicester	Naresh Popat	Zone Luxury Developments	Patrick Shannon	Stepnell	Richard Reynolds	Winvic
Andrew Wignall	Salus Approved Inspectors	Wes Scales	Mark J Rees	Nicola Pettman	Stephen George + Partners	Jayne Thompson	Turner & Townsend	Guest	MDA Consulting Ltd	Howard Pratt	HSP Consulting Engineers	Richard White	Stepnell	Ben Trinder	Unique Window Systems Ltd
		David Sturgis	Sturgis Snow and Astill	Andrew Varley	Avarco	Geoff Ward	Stephen George + Partners	Guest	MDA Consulting Ltd	Darren Wallace	Stepnell	Will Watts	Hallam Read	James Wilson	Davidsons Homes
		Guest	Sturgis Snow and Astill	David Waters	Steris Ltd	Guest	Stephen George + Partners	Guest	MDA Consulting Ltd	Mariana Zuvnca	MAS Architecture				
				Ian Yallop	Stephen George + Partners										



**TABLE 38**                      **TABLE 39**                      **TABLE 40**                      **TABLE 41**                      **TABLE 50**                      **TABLE 51**                      **TABLE 52**                      **TABLE 53**

<b>Unique Window Systems Ltd</b>		<b>MDA Consulting</b>		<b>GWH Architects Ltd</b>		<b>The Fox Group</b>		<b>rg+p</b>		<b>Nelsons Solicitors</b>		<b>G F Tomlinson Building Ltd</b>		<b>Architects LE1 LLP</b>	
Dylan Askew	Winvic	Hannah Brennen	MDA Consulting Ltd	Dora Christodoulou	Sterling Lettings	Richard Clowes	Richard Clowes	James Badley	rg+p	Ryan Astill	Astill Planning Consultants Ltd	Chris Flint	G F Tomlinson Building Ltd	Carl Ackers	BEC
Steve Brooker	S & S Contracting	Patric Cassidy	Cassidy Group	Floros Christodoulou	Sterling Lettings		Property Search & Consultancy	Mitch Dale	rg+p	Kylie Chapman	Nelsons Solicitors	Nick Gould	KMRE Group	Nash Bains	Lascelles
Adam Dibbo	Winvic	Ashley Cowdrey	Couch Perry Wilkes	Beth Sayers	GWH Architects Ltd	Robert Day	Blueprint Interiors	Neil Fletcher	McLaren Group	James Coningsby	Nelsons Solicitors	Martin Lakin	AJA Architects	Phil Dodd	Architects LE1 LLP
Greg Gracey	Unique Window Systems	Ian Guylar	Pedigree Filbert	Jon Sayers	GWH Architects Ltd	Andrew Eagle	Josiah Hinks	Tom Hazelton	Hazelton Group	Riaz Dudhia	Nelsons Solicitors	Dale Lui	LK2 Architects	Dan Edwards	PRP Leicester
Charley Hicks	D W Hicks	Rob McGuinn	MDA Consulting Ltd	Paul Thurlby	GWH Architects Ltd	Jon Fox	The Fox Group	Natalie Keene	rg+p	Paul Fenton	Nucleus Commercial Finance	Les Needham	G F Tomlinson Building Ltd	Daniel Gaunt	Fine and Country
Sam Hicks	D W Hicks	Craig Mitchell		Toni Thurlby	GWH Architects Ltd	Andrew Taylor	The Fox Group	Alex Neale	Court Collaboration	Sam Maitland	Jelson Ltd	Rob Sharman	G F Tomlinson Building Ltd	Diana Hawkins	BEC
Cameron Lang	Crest Nicholson	Scott Moore	TMDP (Special Projects) Ltd			John Waite	The Fox Group	Stephen Pratt	Godwin Developments	Alex Prowse	Astill Planning Consultants Ltd	Tom Spink	Pulse	Brian Mullin	Marrons Planning
Scott McDermott	Winvic	Vijay Patel	Kenworth Group			Sue Warner	The Fox Group	Alex Reid	Mather Jamie	Peter Rees	Nelsons Solicitors	Ben Ward	Rula Developments	David Pritchard	Marrons Planning
Tej Naik	Unique Window Systems	Stuart Petrie-Tootell	MDA Consulting Ltd	<b>Weightmans LLP</b>		Guest	The Fox Group	Lucy Thompson	rg+p	Mandeep Singh	G S Developments Ltd	Guest	G F Tomlinson Building Ltd	Paul Roberts	Architects LE1 LLP
Atul Patel	Unique Window Systems	Matthew Rimola	MDA Consulting Ltd	Richard Osborn	Weightmans	Guest	The Fox Group	Ian Towlson	Scape	Jason Sobey	Aimrok Ltd	Guest	G F Tomlinson Building Ltd	Taran Singh	4G Holdings
Mick Starkey	S & S Contracting	Jason Sobay	Kenworth Group	Dharminder Shoker	University of Leicester	Guest	The Fox Group	Robert Woolston	rg+p					Gareth Smith	Olivet Construction
Ben Summerton	Hallam Read	Peter Sutton	Sutton Land Development	Richard Vaughan	Weightmans			Guest	rg+p					John Webb	Castle Consultants
				Paul Watson	Loughborough University										
				Guest	Weightmans										
				Guest	Weightmans										

**TABLE 42**                      **TABLE 43**                      **TABLE 44**                      **TABLE 45**                      **TABLE 54**                      **TABLE 55**                      **TABLE 56**

<b>Innes England</b>		<b>Mazars</b>		<b>Willmott Dixon Construction</b>		<b>A+G Architects</b>		<b>Diamond Wood and Shaw Ltd</b>		<b>Ridge &amp; Partners LLP</b>		<b>Curtins Consulting Ltd</b>	
Rav Bagri	Metro Bank	Chris Darlington	Mazars LLP	Liz Cartwright	Cartwright Communications	Will Aust	A+G Architects	Lewis Charity	Countryside Properties	Sam Bevin	Ridge & Partners LLP	Jonathan Aldworth	Pulse Associates
Jenny Clarke	Innes England	Ian Elliot	Nicholls Colton Ltd	Tim Chambers	Willmott Dixon	Alan Filby	A+G Architects	Richard Daw	Lungfish Architects	Peter Browne	Ridge & Partners LLP	Richard Dobbs	Morgan Sindall
Sam Daley	Jelson Ltd	Tom Goldsworthy	Davidsons	Gary Davies	Willmott Dixon	Gaynor Hall	Birkett House School	Paul Diamond	Glympton Construction	Steve Cooper	Ridge & Partners LLP	James Garment	Curtins Consulting Ltd
Peter Doleman	Innes England	Nick Greaves	Resurgo Properties Ltd	Greg Freer	Plaza Ltd	Andrew Hardy	A+G Architects	Sam Harding	Glympton Construction	Tom Granger	Delgatie Ltd	Nick Gregory	CPMG Architects
Phil Glenn	Innes England	Sarah Greaves	Resurgo Properties Ltd	Nick Heath	Willmott Dixon	Matthew Harvey	Hall Orchard School	Hugh Harriman	Galliford Try	John Harvey	Ridge & Partners LLP	Adam Keightley	Anderson Green
Joe Reilly	Innes England	Andy Holmes	KLH	Fiona Jackson	Matt Hampson Foundation	Jon King	MPP (UK)	Steve Masic	ADM Surveyors	Daniel Marlow	Ridge & Partners LLP	Ben Lancaster	Curtins Consulting Ltd
Rahul Saini	Innes England	Bob Johnson	Mazars LLP	Roy Jackson	Matt Hampson Foundation	Mark Pheasey	Fortem	Joe Menna	Galliford Try	Roger Sandell	Ridge & Partners LLP	David Spurrell	Curtins Consulting Ltd
Tom Shelbourn	WS Yeates	Pujah Joshi	Mazars LLP	Gregg Matthews	Derry Building Services	Sanjeev Sharma	Leicester University	Kieran Roberts	Lungfish Architects	Brett Simpson-Lyons	SLA Design	David Strong	Curtins Consulting Ltd
Will Simpson	HSBC Bank	Tony Ryan	WBS MEP Holdings Limited	Nick Preedy	Willmott Dixon	Amanda Stewart	A+G Architects	Fergus Shaw	Diamond Wood and Shaw Ltd	Nick Southern	Delgatie Ltd	Neil Walker	Faithful & Gould
Lauren Webb	Jelson Ltd	Stephen Vickers	Turnbull & Company Limited	Paul Watts	Sage Building Envelope Contractors	Sharon Townsend	Leicester County Council	Craig Taylor	Lungfish Architects	Kamlesh Vaitha	emh Homes	Guest	Curtins Consulting Ltd
				Matt Wrate	Couch Perry Wilkes			Jackie Weager	University Hospitals Coventry & Warwickshire NHS Trust	Carl Vann	Midland Heart	Guest	Curtins Consulting Ltd
				Guest	Willmott Dixon			Stephen Webb	Gallagher	Elsie Wong	Midland Heart	Guest	Curtins Consulting Ltd

**TABLE 46**                      **TABLE 47**                      **TABLE 48**                      **TABLE 49**

<b>Premier Development Contractors</b>		<b>Corporate Debt Solutions – Global</b>		<b>Willmott Dixon Construction</b>		<b>BSP Consulting</b>	
Alister Ferris	PDC	Paul Baker	Bakers Waste	Terry Downs	Willmott Dixon	Paul Elphick	BSP Consulting
Ryan Prichard	DSA	Ash Barratt	CDS – Global Ltd	Les Henson	Willmott Dixon	Catherine Howard	Wheatcroft Land
Ian Smith	Real Insurance	Ali Beddow	CDS – Global Ltd	Sue Horn		Asghar Hussain	Moss Architects
Keshiv Sudera	DSA	Richard Brown	CDS – Global Ltd	John Humphries	Leicestershire County Council	Stuart Mitchell	Lindum
Shyam Sudera	PDC	Ashley Cooper	Edward Cooper Young	Stuart Kerr	Willmott Dixon	David Singleton	DSA Environment & Design
Klauder Treviso	DSA	Samantha Gamble	Edward Cooper Young	Steve Nitman	Willmott Dixon	Jef Todd	BSP Consulting
Daisie Wiltshire	PDC	Charles Howard	Edward Cooper Young	Sue Owen	Leicestershire County Council		
Guest	PDC	Martin Kirby	Kier Group	Mark Perris	Harborough District Council	<b>Gleeds</b>	
Guest	PDC	William Richardson	Edward Cooper Young	Eric Van Kliederman	Cantoo Interior Design	Sue Churchill	Church Lucas Architects
Guest	PDC	Graham Vincent	Travis Perkins	Guest	Willmott Dixon	Anthony Cork	Gleeds
				Guest	Willmott Dixon	Mark Davies	De Montfort University
				Guest	Willmott Dixon	Nick Hilton	North Midland Construction
				Guest	Willmott Dixon	James Marshall	Gleeds
						Guest	Gleeds

**GUEST LIST SPONSOR**



Kier Construction comprises a UK-wide network of regional contracting businesses and major projects expertise in the UK and overseas. Part of this division is Kier Construction Central, a leading provider of design, construction and associated services across the Midlands. Operating from four offices, most locally in Nottingham and Solihull, Kier Construction Central provides services to clients from feasibility study through to post occupation care. Our activities are the complete process management of the construction journey including surveys, stakeholder engagement, design, logistics, building construction and aftercare of the customer post occupation. We have extensive experience and an excellent reputation of working in partnership with clients across a diverse sector base on projects ranging from £250k through to £40m. Our approach and experience enables us to make a considerable contribution to the overall team effort, predicting and resolving construction related problems and suggesting innovative approaches wherever possible. Our vision is to continue to exceed our customers' expectations and to grow our business in a sustainable manner in line with our values, which are: Enthusiastic, Collaborative, Forward Thinking.

Contact Information:  
 Richard Charman  
 0115 986 8856  
 richard.charman@kier.co.uk  
 www.kier.co.uk

CORPORATE SPONSORS

